

CZECH REPUBLIC

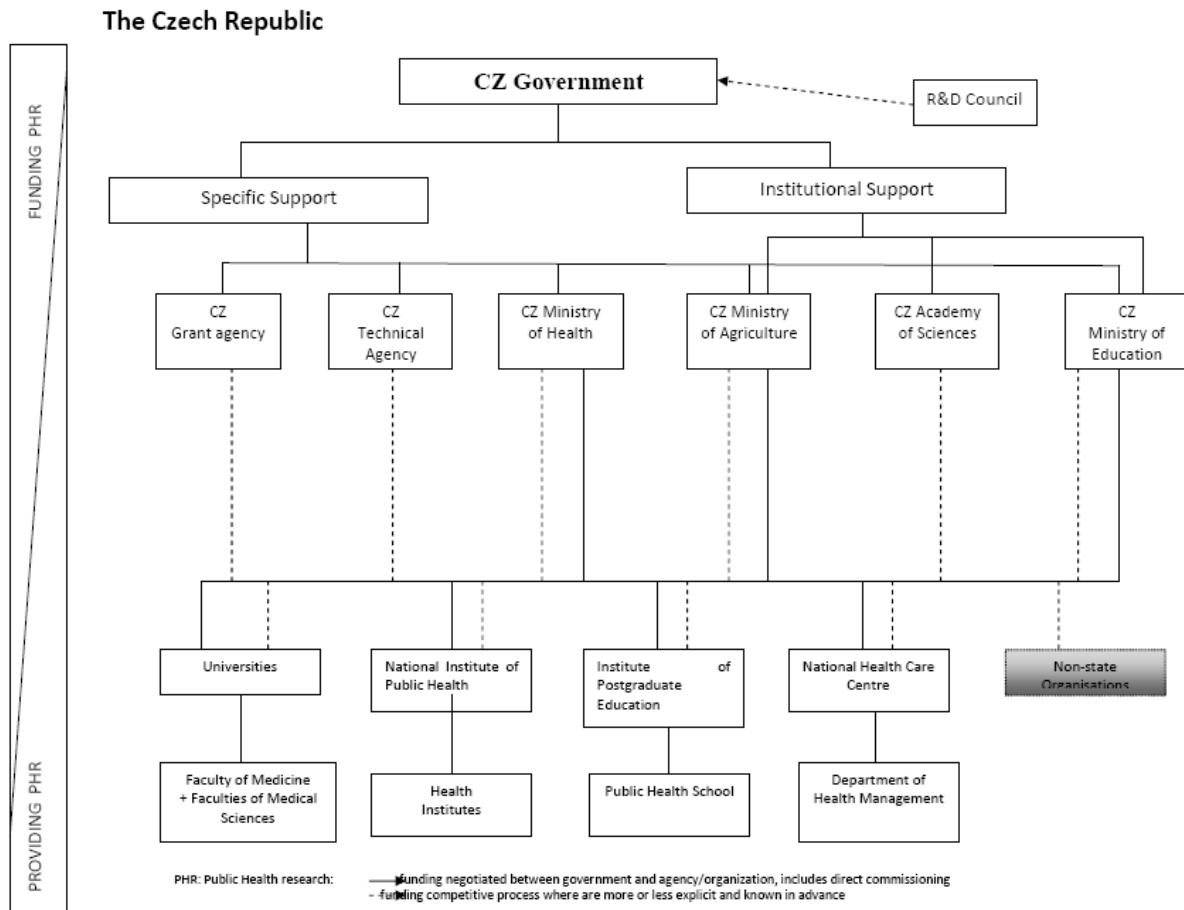
This information on national public-health research structures has been gained from country key informants and internet searches for STEPS (Strengthening Engagement in Public Health Research www.steps-ph.eu), a project funded by the European Commission Seventh Framework Research Programme. It builds on the country profiles and reports from Ministries of Health and Ministries of Science that were created previously for SPHERE (<http://www.ucl.ac.uk/public-health/sphere/sphereprofiles.htm>).

The organogram shows the structure for managing and providing public-health research from the perspective of financial flows. The main organisations are also briefly described, with their URLs, and other relevant national documents and information on public-health research.

Note: **'Public-health research'** includes all health research at population, organisation and system level broadly relevant to health and health-care policy and practice. It excludes clinical and laboratory (biomedical) research.

1. Organogram

Objective: to show in a diagram the national structures of research commissioners and providers, linked by the funding streams



2. Research Commissioners

Objective: to describe the 'commissioning' level – ministries, national agencies and devolved (e.g. regional) organisations which develop research policy and strategies, and hold budgets that fund public-health research

NB should include (a) devolved or regional funding agencies; (b) independent / foundation funding agencies):

For the purpose of providing public support for science and research, the provider is the organisation body of the state or independent self-governing unit that decides on support provision and that provides this support. Public support is either of special or institutional character.

The authority of individual central state administration bodies is specified by the so called Competence Act (Law No. 2/1969 Coll., on formation of ministries and other CZ state administration central bodies, as amended - <http://www.epravo.cz/top/zakony/sbirka-zakonu/uplne-zneni-zakona-ze-dne-8-ledna-1969-c-21969-sb-o-zrizeni-ministerstev-a-jinych-ustrednich-organu-statni-spravy-ceske-republiky-3142.html>)

The main authorities in research and development are given by the Law No. 130/2002 Coll., on the support of research and development from public resources - <http://www.vyzkum.cz/storage/att/9A5FB83C4645ADFD6413FD8938960D0C/zakon130.pdf>

2.1. Research and Development Council (RDC) is a professional and advisory governmental body for the field of research and development (R&D) and according to the Law No. 130/2002 Coll. ensures in particular the processing of long-term basic directions of research and development in the CR, processes annual analyses of R&D and proposes to the government the amount of overall R&D expenses and their allocation in individual budget sections - <http://www.vyzkum.cz/FrontClanek.aspx?idsekce=496>.

2.2 The Ministry of Education, Youth and Sports (MEYS CR) - is the central administrative authority responsible for research and development. From research and development expenses it in particular ensures the preparation of National Research and Development Policy of the Czech Republic; formulation of priorities in a form of National Research Programme and realisation of research priorities in the areas that do not fall within the competence of the providers, in a form of ensuring parts of National Research programme, international collaboration of the Czech Republic in research and development, including negotiations with bodies and institutions of the European Communities and individual states of the European Communities with authority for research and development, with an exception of international collaboration in defence research and development, which falls within the competence of the Ministry of Defence.

<http://www.msmt.cz/vyzkum>

In the field of PHR, special financial support can be demanded for specific university research. <http://www.msmt.cz/vyzkum/ucelova-podpora-na-specificky-vysokoskolsky-vyzkum>

2.3 Ministry of Agriculture of the CR (MA) - integrated researches within the framework of institutional support (MA - <http://eagri.cz/public/eagri/>)

2.4 Ministry of Health of the CR (MH) - the expert advisory body of the Ministry of Health of the CR is the Internal Grant Agency of the Ministry of Health (hereinafter referred to as

"IGA MH") - http://www.mzcr.cz/Odbornik/obsah/verejna-soutez-2009-2011_987_3.html

2.5 Grant Agency of the CR (GA CR) - grant projects -

<http://marmolata.gacr.cas.cz/?p=150> - is an organisational department of the state and administrator of budget section according to § 30 Sec. 1 Law No. 130/2002 Coll. Grant Agency is an independent accounting unit with special and institutional means allocated by the law on state budget of the Czech Republic. Its basic task is to prepare and realise groups of grant projects and other activities in the area of *basic research*, including public tenders in research, experimental development and innovations for support of grant projects. In the classification of domains in the central register of projects there is stated domain **FQ - Public Health Care, Social Medicine**.

<http://www.vyzkum.cz/FrontClanek.aspx?idsekce=1374>

2.6 Technological Agency of the CR (TA CR) - programme projects - Technological Agency of the Czech Republic (hereinafter referred to only as "Technological Agency") is an organisational department of the state and administrator of budget section according to § 36a and Law No. 130/2002 Coll. Its main task is to prepare and realise *applied research* programmes, experimental development and innovations including programmes for the needs of state administration, public tenders in research, experimental development and innovations for the support of programme projects and commissioning of public contracts in research, experimental development and innovations. Technological Agency is an independent accounting unit and administers special and institutional means allocated by the law on state budget of the Czech Republic.

http://www.tacr.cz/dokums_soubory/statut_tacr_priloha_usneseni_vlady_uv091207_0.pdf

2.7 Grant Agency of the Academy of Sciences of the CR (GA AS) - is a department of CZ Academy of Sciences. The mission of GA AS is to support quality projects that have the character of *basic*

research and base the support on suggestions of research teams and individuals. The activity of

GA AS contributed to realisation of Research and Development Conception Development in the Academy and that of National Policy of CZ R&D&I. GA AS in accordance with Law No. 283/1992 Coll., on the Academy of Sciences of the Czech Republic, as amended, and in accordance with Law No. 130/2002 Coll., distributes special financial means designated for this purpose from the budget of the Academy and possibly from other resources for grant projects' support on the basis of public tender in research and development.

http://www.gaav.cz/miranda2/export/sites/gaav.cz/cs/files/Statut_GAAV.pdf

3. Research Providers

Objective: to describe the 'providers' – organisations which receive funding for public-health research

If these are 'national' organisations which also set strategy, they are presented in both upper and lower levels of the diagram.

Some specialised public-health institutes are independent, but in many countries they are linked to, or within, the university sector – their 'box' is both within and outside the universities' box.

The applicant for special support in science and research can be an organisational constituent of the state or organisational unit of a ministry that deals with research and development and also legal or natural person that applies for provision of support.

3.1 Public administration institutions (state administration and self-government):

3.1.1 **Public universities** – this in particular involves institutes or departments of social medicine and public health care of medical faculties of Charles University in Prague – <http://www.lf3.cuni.cz/cs/pracoviste/verejne-zdravnictvi/>, Hradec Králové - <http://www.lfhk.cuni.cz/Karolinka/Department/default.asp?tsk=dep&lng=cz&i=190> and in Pilsen - <http://www.lfp.cuni.cz/oddeleni/37-ustav-socialniho-lekarstvi.html>, Masaryk University in Brno - <http://www.muni.cz/med/110520/people>, Palackého University in Olomouc - <http://www.usl.upol.cz/>.

In the area of PHR there also engage institutes or departments of medical management or health care of medical science faculties (Palackého University in Olomouc) <http://www.upol.cz/fakulty/fzv/struktura/pracoviste-fzv/ustav-zdravotnickeho-managementu/>, of medical studies (Ostravská University in Ostrava) <http://fzs.osu.cz/uom/>, of medical-social studies (University of South Bohemia in České Budějovice) <http://www.zsf.jcu.cz/struktura/katedry/verzdrav/>.

3.1.2. State-funded institutions of the MH CR:

a) *National Institute of Public Health and its reference workplaces* - the institute was established for preparation of data for national health policy, for health support and protection, to ensure methodical and reference activities in the area of public health protection, for monitoring and research of relationship between living conditions and health, for international collaboration, to control the quality of services provided in the area of public health protection, for post-gradual education in medical branches of health protection and support and for medical education of the population - <http://www.szu.cz/poslani-ustavu> and workplaces of public administration - health institutes in individual regions -

<http://portal.gov.cz/wps/portal/s.155/697?kam=kategorie&kod=0173>.

b) *National Centre of Health-care and Non-medical Health-Care Disciplines* - NCHNHD in Brno that ensures lifelong education in the field of non-medical disciplines -

<http://www.nconzo.cz/web/guest/nconzo/structure/regulation>

c) *Institute of Post-gradual Education in Health Care* - IPEH in Prague, which is a specialised educational and scientific workplace that ensures and performs for the establisher a conceptual, analytical, pedagogical, methodical, coordination, registration, assessing, expert, scientific-research and accreditation activity in the field of specialised education of health-care workers. The School of Public Health serves as specialised public health workplace

<http://www.ipvz.cz/pracoviste/2940/informace-o-pracovisti-65.aspx>.

3.2 Non-state institutions:

3.2.1 *The Healthy Cities of the Czech Republic (HCCCZ)* - the interest association of legal persons Healthy Cities of the Czech Republic is an association of active cities, municipalities and regions whose programmes follow the principles of sustainable development, health support and general quality of life. The association helps the member municipalities in particular in the area of public engagement, realisation of local Agenda 21, organisation of community campaigns, strategic and community planning, system of health support on the local level etc. <http://www.nszm.cz/index.shtml>

3.2.2 *Green Circle in Science and Research* - association of environmental

organisations - <http://www.zelenykruh.cz/cz/legislativni-centrum/>

3.2.3 *Czech Health Support Society* - civic association. The association's objective is to stimulate the public to active interest in their own health, to participation in creation of healthy living conditions and support of healthy lifestyle

<http://www.cspz.cz/Programove-cile/>

3.2.4 *National Reference Centre* - interest association of legal persons -

<http://www.nrc.cz/>

4. Research Strategies

Objective: to describe health-research strategies and statements of research priorities

NB – there should be a national research strategy, a national health-research strategy and – perhaps it may exist! – a national public-health research strategy

4.1 National Policy of Research, Development and Innovations in the CR NP R&D&I for the years 2009 - 2015 - follows the Inter-departmental Concept of Collaboration in Research and Development until the 2015, approved by the CZ government in its resolution of June 9, 2008, No. 852 a that follows the document of European Research Area: New Perspectives.

<http://www.vyzkum.cz/FrontClanek.aspx?idsekce=532844>

The data are summarised in the publication by publishing house SLON: The White Book of Research, Development and Innovations in the CR and in the magazine ERGO, ISSN 1802-2170. - <http://www.strast.cz/ergo/>

The National Policy of R&D until the 2015 sets the following priorities

4.2 National Research Programme - NRP - sets the priorities: in the area of PHR only the thematical programme No. 1 - Quality of Life - sub-programme population's health (MH CZ in charge) and Quality and Safe Nutrition (MA CZ in charge).

<http://www.vyzkum.cz/storage/att/2AC072A125D19F00757B5E3C733ED0C6/npv.pdf>

4.3 Departmental Programme of Research and Development of the Ministry of Health (DPR III) - the programme is based on the approved Concept of Applied Medical Research and Development until the 2015 a and from the amended Law No. 211/2009 Coll., on the support of research, experimental development and innovations. The basic objectives of the approved Departmental Programme DPR III among others include:

- improvement of concrete contribution to health care in individual areas of applied research (primarily in diagnostics, therapy and prevention) in a form of provision of special programme project support,
- support of molecular-biological approaches in relevant areas of medical research and development,
- ensurance of further development of the current top workplaces including creation of conditions for greater engagement of young research workers, etc.

Allocation of public means for DPR III:

DPR III.	2010	2011	2012	2013	2014	2015	Total
Public resources	100	212	746	1 150	1,100	1,050	4,358
Own resources	4	6	13	22	22	22	89
Total	104	218	759	1,172	1,122	1,072	4,447

http://www.mzcr.cz/unie/dokumenty/resortni-program-vyzkumu-a-vyvoje-ministerstva-zdravotnictvi-iii-na-leta-kod-nt_2356_993_3.html

4.3.1 Sub-section of Departmental Programme DPR III 09 - The relationship of health and environment, preventive approaches in health care, have the following priorities:

- Identification of health risks and evaluation of influence on health based on the way of life and living or working environment.
- Development, verification and validation of new sensitive bio-markers of exposure and effect.
- Individual, genetic, behavioural, socio-economic, environmental and institutional determinants of health.
- Methods of eliminating risk factors on all levels.
- Injury prevention, in particular that of children and seniors.

4.3.2 Sub-section of Departmental Programme DPR III 12 – Health care, health care systems and informatics have the following priorities:

- *New methods in the field of health care and tools of health policy in the activity of health care systems.*
- *Development of the standard and system of processing health care information, including indicators of efficiency and quality.*
- *Development of information means for citizens, education of health care workers and application of the current eHealth concept.*

http://www.mzcr.cz/unie/dokumenty/resortni-program-vyzkumu-a-vyvoje-ministerstva-zdravotnictvi-iii-na-leta-kod-nt_2356_993_3.html

4.4 Research priorities of individual organisations - primarily those of public universities and National Institute of Public Health

5. Programmes and calls

Objective: to show what research is supported and how much funding is intended for each programme or call.

'Programmes' may be general – e.g. building capacities, or specific – e.g. 'health behaviours', 'disease registers', 'working with industry' etc.

Some research providers are funded directly, through regularly negotiation. However, research is increasingly funded in response to competitive calls.

A call made within a programmes usually has a fixed time frame. Proposals are submitted by the researchers, and selection is through peer review.

<i>Calls</i>	<i>Thematic (programmes)</i>	
2011 - 2015	Technological Agency of the CR	Programme for support of applied research and experimental development ALFA http://www.tacr.cz/programy-ta-cr/
2011 - 2015	Internal Grant Agency of the CR	Project thematically fulfilling the sub-section 09 a 12 – see 4.3.1 and 4.3.2 http://www.mzcr.cz/Odbornik/dokumenty/vyhlaseni-jednostupnove-verejne-souteze-o-ucelovou-podporu-iga-mz-na-reseni-programovych-projektu-zdravotnickeho-vyzkumu-a-vyvoje-na-leta-3840-1749-3.html
2011 - 2015	Grant Agency of the CR	PHR is not stated in departmental panels

6. European contacts

6.1. National FP7 Contact point (Health area)¹

6.1.1 doc. RNDr. Judita Kinkorová, CSc. – Technological Centre of the Academy of Sciences of the CR, Praha. E-mail address: kinkorova@tc.cz

6.1.2 prof. RNDr. Pavel Anzenbacher, DrSc. – Institute of Pharmacology, Medical Faculty of Palackého University in Olomouc. E-mail address: pavel.anzenbacher@upol.cz

6.2. National DGSANCO Contact point²

6.2.1 MUDr. Hana Janatová, CSc. – National Institute of Public Health, Prague. E-mail address: janatova@szu.cz

6.2.2 doc. PhDr. Vladimír Kebza, CSc. – National Institute of Public Health, Prague. E-mail address: kebza@szu.cz

6.2.3 doc. PhDr. Kateřina Ivanová, Ph.D. – Medical Faculty of Palackého University in Olomouc. E-mail address: katerina.ivanova@upol.cz

Objective: to provide names and affiliated institutions of national contact points of FP7 (health) and DGSanco

¹ Source: http://cordis.europa.eu/fp7/ncp_en.html, assessed in February 2010

² Source: http://ec.europa.eu/health/programme/policy/index_en.htm assessed in February 2010